



USER MANUAL
FOR THE BX420
BATTERY CASE FOR
SAMSUNG GALAXY S7

100%
Satisfaction
Guaranteed

To activate the 1-year warranty on your battery case, visit <http://www.alpatronix.com/warranty> and click on the warranty link to register your product by filling out a simple and easy form. Alpatronix warranty will fully cover your purchase against all defects in material and/or workmanship for an entire year. Most return policies only allow returns for a period of 14 – 30 days from the date of purchase, so hurry and register your product to give yourself peace of mind knowing Alpatronix has got you covered for a whole year.

Product specifications

Model - BX420

Input: DC 5V - 1A

Output: DC 5V - 2A (Max)

Battery Capacity: 4500mAh, 16.65Wh

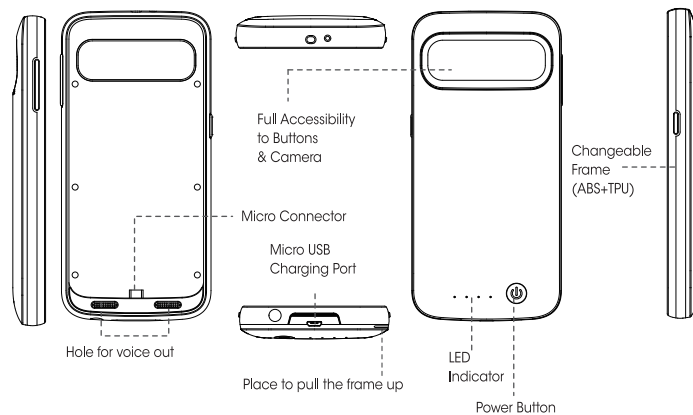
Battery Type – Li-polymer

Compatible with – Samsung Galaxy S7

Dimensions – 0.65 x 2.94 x 6.11 inches | 16.6 x 74.8 x 155.3mm

Weight – 4.6 oz. (130g)

Illustrations

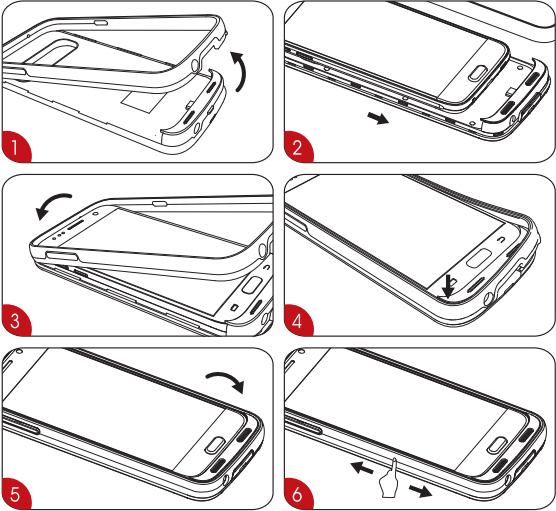


Features

- Fully charges your Galaxy S7 within 2 hours
- Strong & durable material protects your Galaxy S7 from bumps & scratching
- Protective IC circuitry avoids short-circuits, over-charging and malfunction even under extreme conditions
- Visit our website or contact us to learn how you can get more bumpers

Installation

- Remove the bumper and place the Galaxy S7 into the battery case.
- Install the bumper on top in the correct orientation and snap into place on all sides.
- Removing: Slide your finger in the bezel on the bottom right side of the case and lift the bumper.



Notes

When the battery case is turned on, you will notice the charging signal appear on your battery indicator. When charging is finished, the signal will disappear. The battery case includes a USB cable. Use the provided USB cable to charge and sync your battery case with a wall charger, or with a laptop/desktop.

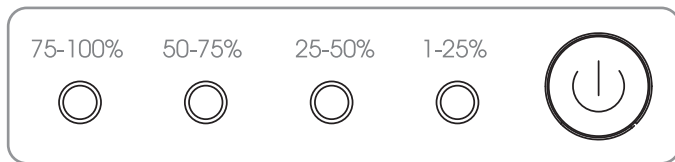
Charging your Battery Case and Galaxy S7

- Connect your battery case (S7 already installed) to the USB power cable
- Connect the USB power cable to any USB power source such as computer to start charging
- Charge until the LED indicators read full

Charging your Galaxy S7 with Battery Case

- Press the power button (about 3s) to charge your Galaxy S7
- Press again the power button (about 3s) to turn off the battery case when the S7 is fully charged. This can significantly save the capacity of the built-in battery so you can charge the phone again next time.

LED indicators



Package Contents

- Battery Case
- USB power cable
- User Manual
- Screen Protector

Warning

- Read all instructions and warnings prior to using this product. Alpatronix is not responsible for improper use of this product. Improper use may result in product damage, excess heat, toxic fumes, fire or explosion, which may cause you harm.
- Do not store battery case in high temperature environments, including intense sunlight and/or heat.
- Always contact the manufacturer or take used batteries to the nearest hazardous waste collection
- Do not place battery case in fire or other excessively hot environment.
- Be cautious of excessive drops, bumps, abrasions, or other impacts to this battery. Discontinue use if dents, tears, punctures, deformities, or corrosion are visible. Contact Alpatronix or dispose at the nearest Hazardous Waste Collection Facility.
- Do not disassemble this battery case or attempt to modify it in any manner.
- Do not expose this battery case to moisture or submerge it in liquid. Keep the battery dry at all times.
- Do not attempt to charge battery case using any method, apparatus, or connection other than the device's USB connector.
- Do not attempt to replace any part of this battery.

Warning

- If the battery case is intended by purchaser to be used by a minor, purchasing adult agrees to provide detailed instructions and warnings to any minor prior to use. Failure to do so is the sole responsibility of purchaser, who agrees to indemnify manufacturer for any unintended use/misuse by minors.
- All battery cases have gone through a thorough Quality Assurance inspection. If you find that your battery is excessively hot, emitting odors, deformed, abraded, cut, or is behaving abnormally, immediately stop use and contact Alpatronix at support@alpatronix.com or by phone at (888) 407 - 7515.
- For extended storage, first charge your battery case for one hour.
- Never dispose of battery case in the garbage. Disposal of batteries in the garbage is unlawful under state and federal laws and regulations. Always contact the manufacturer or take used batteries to the nearest hazardous waste collection facility or a battery-recycling center.

Help us in our charitable endeavors:

Alpatronix donates **\$1** to charity for every review you leave on Amazon.com. Help us make the world a better place, AND help us and your fellow customers by giving us your valuable feedback.

Thank you for being a contributing citizen of this world !



ASPCA

unicef

Please remember that your product comes with a 1-year warranty. If there is any problem with your product, please do not hesitate to contact us.

PO Box 17070, Anaheim, CA 92806
United States of America
(888) 407 - 7515

support@alpatronix.com