



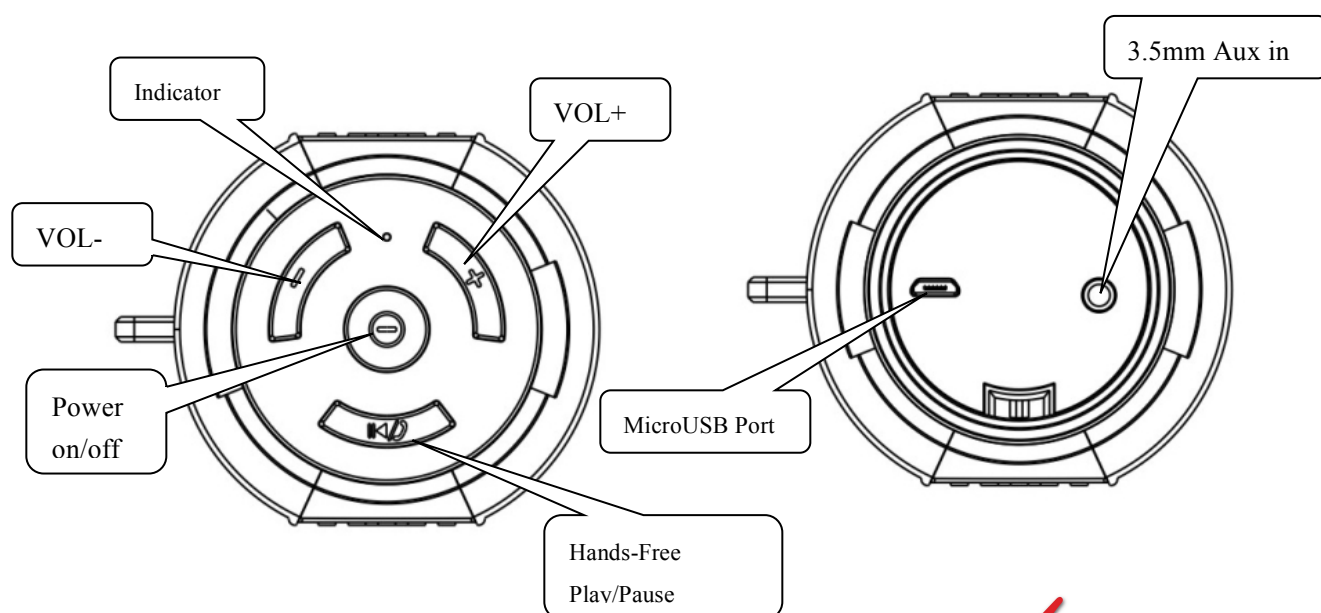
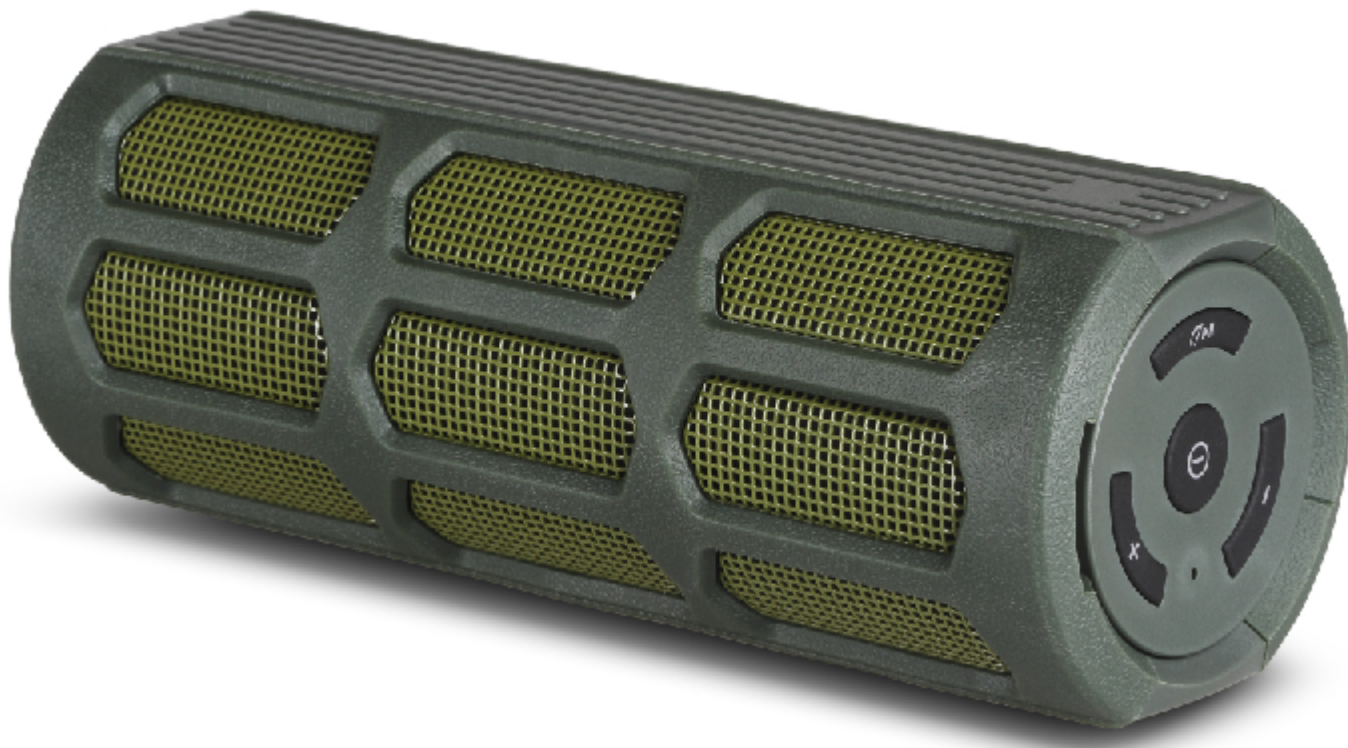
To activate the 1-year warranty on your Bluetooth Speaker, visit <http://www.alpatronix.com/> and click on the warranty link to register your product by filling out a quick and easy form. The Alpatronix warranty will fully cover your purchase against all defects in material and/or workmanship for an entire year. Most return policies only allow returns for a period of 14 – 30 days from the date of purchase, so hurry and register your product to give yourself peace of mind knowing Alpatronix has got you covered for a whole year.

User MANUAL FOR THE AX410

SPLASH-PROOF BLUETOOTH SPEAKER

Alpatronix is the trademark of Saritek Technical Solutions Inc.

All other brands are registered trademarks of their respective owners.



Step I: Register Your Product

You must register your product to activate the 1-year warranty. It's quick and easy.

Most return policies only allow for a defective product to be returned within 14 – 30 days after the date of purchase... and most issues that happen due to defects in material and workmanship have a knack of happening after this return period has ended. We have seen the sad-puppy look on customers' faces for too long and understand how upsetting it is to spend your hard-earned dollars on something that stops working after a few weeks! That's why Alpatronix's Ironclad Warranty will protect you for a whole year against all defects in material and/or workmanship. So register your product by visiting www.alpatronix.com, and click on the "Warranty" on the top menu to register your product and activate your warranty. Rest easy that you are covered no matter what the return policy is where you purchased your product!

If you have a defective product and need us to take care of you, email us at support@alpatronix.com and rest assured that our support team will make this a quick and easy process with as little pain as possible.

Notice: Alpatronix warranty is only valid within the United States, and only for purchases made from authorized retailers. If you are not sure whether the retailer you are purchasing from is an authorized retailer, please contact us and we will be happy to further assist you. Alpatronix sells directly on Amazon.com, and on the Alpatronix.com website.

Step II: Turn the speaker on

- * Charge the speaker with the USB cable included.

The built-in lithium battery may need to be charged. It is always recommended to charge any electronic device for about 6-8 hours before first time use.

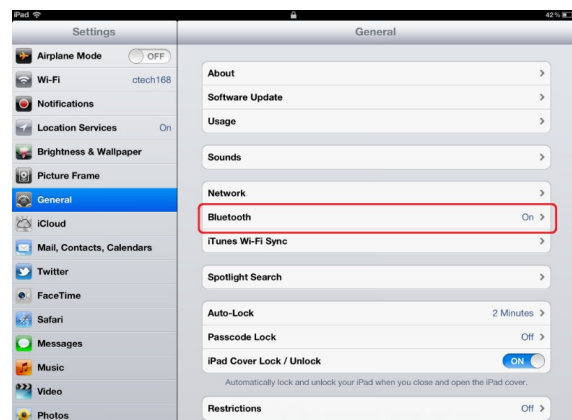
- * Press and hold the power button for 3 seconds.

When turned on, you will hear the speaker emit a chime indicating that it has turned on. Once turned on for the first time, the speaker will emit a second chime and automatically enter pairing mode.

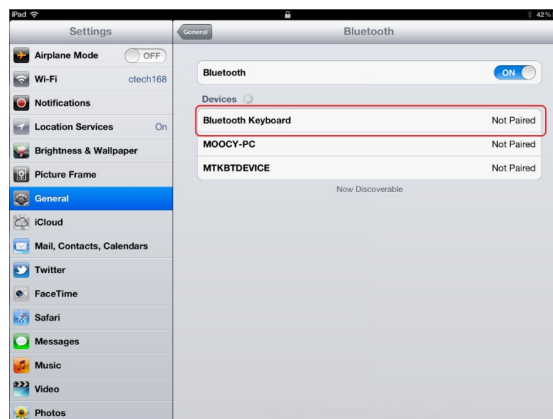
If you have already paired the speaker to a device before, the speaker will automatically detect and pair with the last device it was paired with (as long as that device has its Bluetooth turned on and is within range). If the latest paired device is not within range, the speaker will automatically enter pairing mode again.

Step III: Pair the speaker to your iPhone or Smart Device

- * Once turned on, the speaker will automatically enter pairing mode.
- * On your iPhone or any other Bluetooth enabled device, tap “Settings” → “General” → “Bluetooth”
- * Make sure your iPhone or other smart device’s Bluetooth is turn ON
- * Find “AX410” on the list of available devices, and tap to pair



- * No password is required for most devices, but if prompted, enter “0000” to pair



Step IV: Operation

- To turn on, press and hold the “⏻” button for 3 seconds. You will hear the speaker emit a chime to indicate it has been turned on.
- To play music, press the “🔊▶” button. To pause, press the button again.
- To answer an incoming phone call, press the “📞▶” button. To hang up the call, press the button again.

Note: If you’d like to answer a call privately (through the phone, and not using the speaker), simply answer the call using your phone. The call will be routed automatically through your phone and not broadcasted over the speaker.

- To increase the volume, **press and hold** the “+” button. The speaker will adjust the volume directly on your phone (there is no need to increase the volume both on your phone AND on the speaker).
- To decrease the volume, **press and hold** the “-” button. The speaker will adjust the volume directly on your phone.
- To skip forward, **tap** the “+” button.
- To skip back, **tap** the “-” button.
- To play using AUX 3.5mm jack, simply connect using the AUX cable.

Note:

1. When connected via AUX, the speaker will automatically disconnect from any Bluetooth device it is paired with.

2. When connected via AUX, you will need to control volume and music directly through your phone.

Notes:

- You only need to perform Step III (Pairing) for the initial setup. After the first successful connection, the speaker will connect automatically to your device whenever you turn the power on.
- If you need to connect the speaker to a different device, simply turn off the Bluetooth on the first device. Alternatively, you can find the speaker on your phone's list of trusted devices, and delete it from the list. When the AX410 cannot find the last device it was paired with, it will enter pairing mode again automatically.

Technical Specification:

Bluetooth Specification	Version 4.0
Transmission Distance:	$\leq 30\text{ft (10m)}$
USB Charging Voltage:	DC $5V \pm 0.5A$
Battery Capacity:	3000mAh
Output Power:	6 watts x 2 = 12 watts
Frequency Response:	90Hz - 20KHz
Sensitivity:	80db $\pm 2\text{db}$
S/N Ratio:	76db

Troubleshooting:

If you are unable to connect the speaker to your device, follow the steps below:

- Check if the battery is low. When the battery is low, the speaker may have trouble connecting. Charge the battery fully and try again.
- Check the power switch and make sure it is on. When it is on, the LED under the speaker wire mesh will light up in BLUE for a few seconds.
- Restart the speaker. Press and hold the power button for 3 seconds to turn off, then press and hold for 3 seconds to turn it back on.
- Make sure the Bluetooth on your device is enabled.
- Try removing the pairing by going to the Bluetooth section of your device, choose AX410, and select "Forget this Device." Turn Bluetooth off for 3 seconds on your device, and turn it back on. Repeat Step III to attempt to pair again.

Alpatronix is a registered trademark of
 Saritek Technical Solutions, Inc.
 PO Box 17070, Anaheim, CA 92806
 United States of America
 (888) 407 - 7515
 support@alpatronix.com